

A COASTAL GEM

A HOME THAT REVEALS ITSELF LEVEL BY LEVEL

JEMSTRUCT SOUTH AFRICA
076 707 6842

Jemstruct South Africa specialises in construction, ceilings, partitions and skimming. For this home, the company was tasked with all the wet trades and finishing trades including but not limited to the excavation, site management, brickwork, tiling and carpentry. Jemstruct ensured that this home was built according to the owners' budget and within the required timeframe.

BY TRISHA HARINATH • PROJECT CONSULTANT & PROPERTY COORDINATOR JUDY FOGARTY
PHOTOGRAPHY SUPPLIED BY OLALA INTERIORS



TRANSPARENCY GLAZING 076 681 3774



“Each level and ‘layer’ of the home reveals itself as you walk through it.”

BELOW: Olala Interiors was responsible for the full interior design function of this home right from the start. This included reviewing the electrical and plumbing layouts, bathroom and kitchen designs, specifying the sanitaryware and finishes, and the manufacturing and installation of all cabinetry and soft furnishings. With its own manufacturing division, all the cabinetry throughout, including the kitchen, study and more, was manufactured in-house. The owners’ brief called for an elegant contemporary interior with nostalgic reference to romantic deco times, and this was captured beautifully by Olala Interiors.

Situated in a sought-after coastal estate, this multi-level home is a true gem within this neighbourhood. Designed over three levels, the property reveals itself layer by layer with each space beckoning you to linger for just a little longer.

Not only were these home owners fortunate to find a stunning site on which to build their dream home, but they were lucky to have a helping hand from interior designer Schanè Anderson from Olala Interiors, and architect Tracy Levinson from LevEco Architects – a brilliant team who brought the dream to life. >

ABOVE: Transparency Glazing designed the glass structure that encloses the pool area. Frameless glass was used to create a space with an uninterrupted flow, while blurring the boundaries of the surrounding views. The company also supplied the frameless glass external balustrades as well as the frameless shower doors in this home.

OLALA INTERIORS 032 946 0641





MONO BLOCK 032 947 0716

LEFT: Mono Block undertook the structural design of this grand home. Established in 1968, the company is renowned for its reputable product and service delivery. Mono Block specialises in civil and structural engineering design. In addition, it also provides the following services: precast cobbles, paving and flagstones; geotechnical and concrete laboratory testing, including Troxler, cube and pile testing; and suspended slabs and numerous precast concrete products.

To get the most from this rather tricky and steep site, the family home was spilt into three levels, giving the residents varying degrees of privacy while ensuring ample space for the main living areas where family and friends can relax and take in the ambience of the home as well as the breathtaking views offered by the choice location.

Each level and "layer" of the home reveals itself as you walk through it, and this design is clearly evident in the main living areas, which show off a designer kitchen, a large, grassed "courtyard playground", the lounge and dining area, the patio and the picture-perfect sea view beyond. Outside, the long floating lap pool is the perfect place to unwind and take in the tranquillity that this home emits.

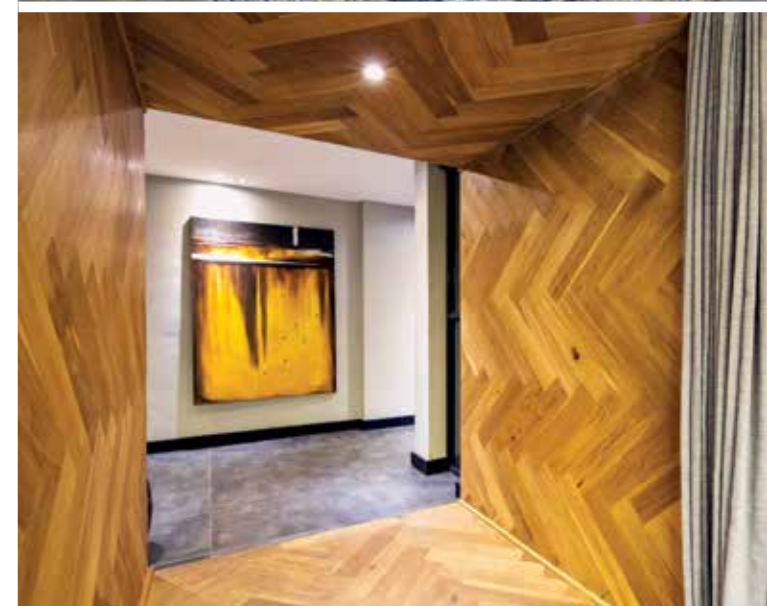


Another clever design highlight is the "hidden" kids' playroom, which is ingeniously located behind a feature wall. This space allows the kids to still be part of the main living area but also gives them privacy in a space that can be closed off a little. All the spaces in the main living area link directly to the pool, patio and grassed garden courtyard, creating a seamless flow from the inside to the outside. This design style has ensured that the spaces are used functionally and allows for easy movement from one area to the next.

Each room has been created with sheer luxury and efficiency in mind, and the kitchen is one of the many standout features. When the design process for this home began, Anderson was invited by Kohler to visit their showrooms in Chicago and the little town of Kohler. She loved how they used "tunnels" to accentuate passing through or transitioning from one space to another and wanted to recreate this feeling. Therefore the ceiling between the passage and kitchen was lowered to create a "tunnel" from which flooring was wrapped.

Other remarkable highlights include the four en suite bedrooms downstairs as well as a pyjama lounge with a large TV and coffee station, which allows the family to retire downstairs in the evening and enjoy the serenity of this space. >

"Bold printed damask, silk screens, intricate patterned wallpaper as well as a neutral palette with pops of rich colours were used."



For the kids' playroom, Olala Interiors was tasked to frame a map so that the owner can show her children where their dad is in the world at any given time as he travels often. "We printed it, in full scale and in happy colours, so that the kids can enjoy and learn at the same time. We finished it off with Zinc cushions and then some," explains Anderson.

To get the "elegant and contemporary look with a nostalgic reference to romantic deco times" that the owners required, bold printed damask, silk screens, intricate patterned wallpaper as well as a neutral palette with pops of rich colours were used. Ultimately this is a timeless and elegant yet extremely comfortable home. 🏡

CONTACTS:

JEMSTRUCT SOUTH AFRICA – building and construction
076 707 6842, 084 902 6333, 082 370 3036

MONO BLOCK – structural engineering
032 947 0716, info@monoblock.co.za,
www.monoblock.co.za

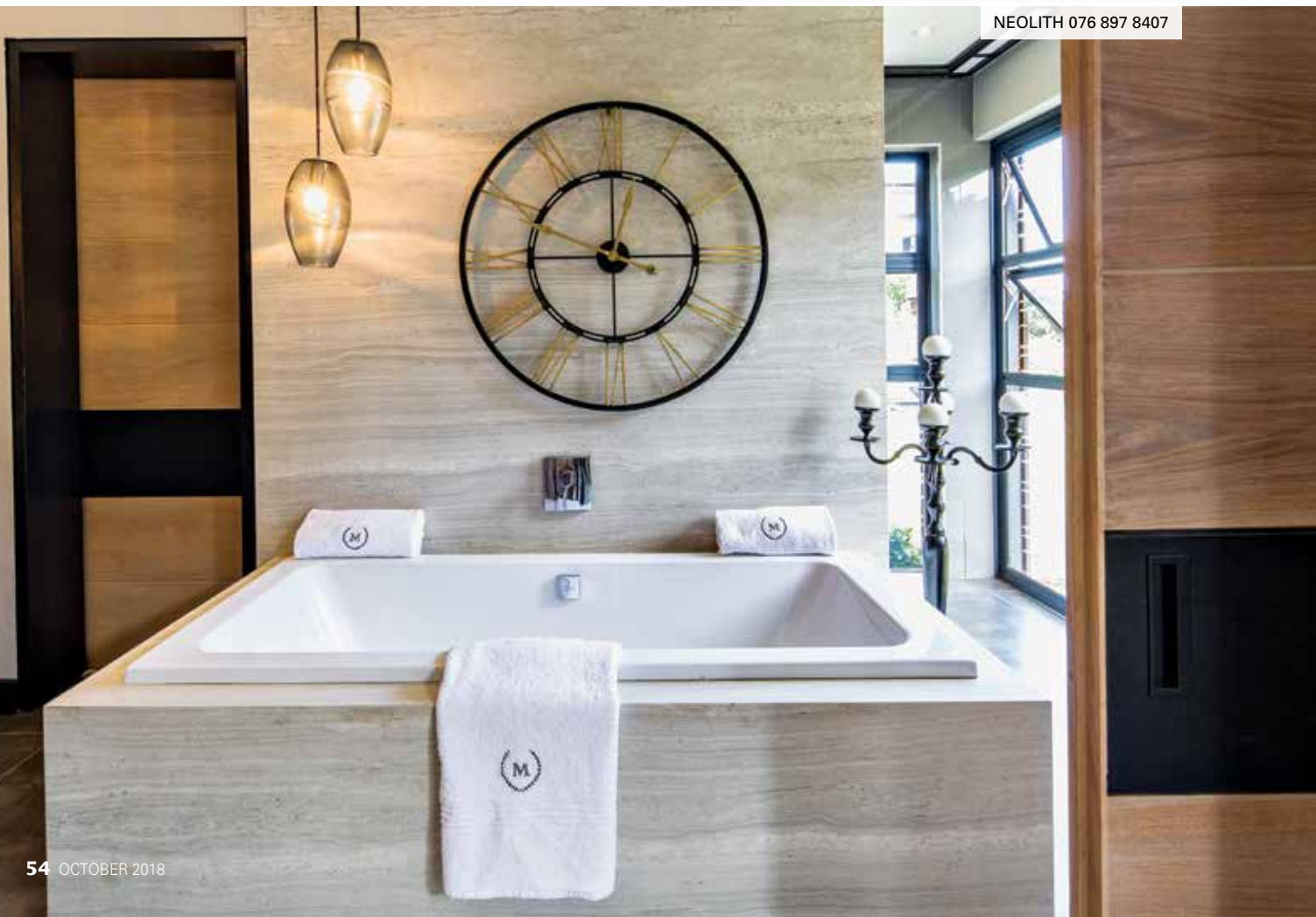
OLALA INTERIORS – interior design and cabinetry
032 946 0641, info@olalainteriors.com,
www.olalainteriors.com

NEOLITH – manufacturer of surfacing materials
076 897 8407, hello@neolith.co.za, www.neolith.co.za

TRANSPARENCY GLAZING – frameless glass products
076 681 3774, info@transparencysa.co.za,
www.transparencysa.co.za



BELOW: One of the requirements from the home owners was the need to achieve an elegant and natural feel in the bathroom. For this to transpire, Neolith's pioneered range of Sintered Stone surfacing was used. This is a new material with extraordinary characteristics and is ideal for internal and external applications. Neolith surfaces are 100% natural and have a near-zero porosity, making them easy to clean, stain-resistant and extremely hygienic – they are indeed the perfect application for timeless, elegant bathrooms.



NEOLITH 076 897 8407