

SOUTH AFRICAN

GARDEN AND HOME

*Your home
your style*

- Display collectables
- Hang pictures
- Mix old and new

WIN
SEALY BEDS
WORTH
R40 000

3 Fun
family
homes

**CLEVER
KITCHEN
IDEAS**

Entertaining-friendly spaces
A brilliant budget makeover

20 EASY
DECOR
UPDATES

JULY 2015 R32,00 (Incl. VAT)
Other countries R26,32 (Excl. Tax)

ISSN 00302163



Clivias: What's new, what's hot

■ EXPERT TIPS FROM TOP LANDSCAPERS ■ PLANTS FOR INSTANT
WINTER COLOUR ■ LONG-LASTING FOLIAGE CONTAINERS

Industrial EDGE

Texture, volume and bold details characterise this KZN home

Keith loves to swim and so this **pool** was designed for laps. "The teenagers love to jump in from the TV lounge, of course," says Schanè. The house consists of two separate pods linked by a walkway. The monopitched roofs allow plenty of light into the interiors.

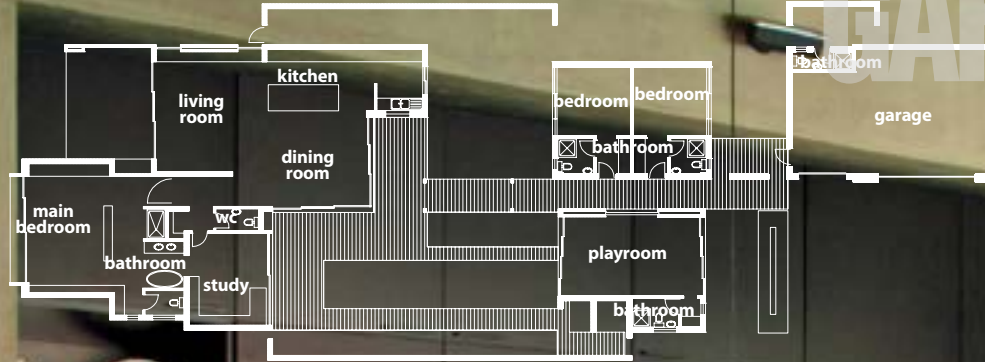
Who lives here

Interior designer and owner of O lá lá! Interiors, Schanè Anderson, her husband Keith, their son Grant, 16, and their Jack Russells, Tinkerbell and Fnoof. Their two older sons, Craig and Matthew, now have their own homes.



The house

Built in two separate structures, one of which houses Grant's bedroom, a guest room and lounge, the house has an open-plan living area, study, main bedroom and veranda. The swimming pool is situated in a courtyard and links the two sections. ▷



The **open-plan kitchen and dining room** is a masterclass in mixing finishes – stainless steel countertops interact beautifully with a raw wood dining table while sleek black cabinetry sits comfortably beside weathered brick and concrete. ▷



“Some of my friends and family were taken aback when I said our new house would have black floors and ceilings,” recalls Schanè Anderson of her plans for the home she and her husband Keith built at Brettenwood Coastal Estate on the KZN North Coast just over a year ago. Schanè’s bold vision proved to be exactly right for the house, however – the black floors and ceilings anchor and emphasise the spacious interior and layers of texture, as well as being the ideal backdrop for the interesting, eclectic decor.

Schanè, an interior designer and owner of O lá lá! Interiors in Ballito, planned the industrial feel from the outset. “We worked with architect Mabette Vermaak and she persuaded us to stretch the dimensions to create a house that, although not enormous, has high ceilings and generous proportions to give it a sense of space. We made a great team and exchanged many late-night e-mails when we were feeling most creative,” recalls Schanè.

The roomy feel is enhanced by oversized glass doors which open up completely, allowing for outdoor living around the

THIS PAGE, CLOCKWISE FROM TOP LEFT: ● The living room is home to many special pieces. ● Tinkerbelle the Jack Russell relaxes in the living room. ● In the study an old tree root supports the desk. Above it is a series of Tom Dixon lights. Plywood shelving and exposed brick continue the industrial feel.

swimming pool in the more protected courtyard, or out on the veranda with its gorgeous views of a dam, a protected green belt area and the Indian Ocean.

“Keith and I have managed to merge our must-haves in this house. He loves to see the sea while as a child I was fascinated by tales of castles built of ancient stone nestled in the woods, and that’s the atmosphere I was aiming for,” she says of the exposed brickwork, off-shutter concrete and reclaimed wood details. “There was also a cost-saving element to this – not having to plaster and paint saved us a lot.” The garden has been planted with over 70 trees which, in time, will give it the forest feel Schanè dreamed of.

The decor works harmoniously with the architecture, but Schanè remarks that most of the furniture and accessories are items they’ve collected over the years. “I think that if you love something, it will always work,” she says. The textured materials, metallic finishes, leather and luxurious fabrics >

THIS PAGE, CLOCKWISE FROM TOP LEFT: ● The cabinetry and brass pendant lights add glamour to the industrial-looking kitchen. ● Instead of an ordinary series of photographs in the study, Schanè and Keith had these pop art portraits of each family member printed on canvas. ● “I’ve never had a dressing table before and I love the feminine touch it brings to the bathroom,” says Schanè. The floor-to-ceiling mirror she chose makes the small space seem much more generous.





GO ONLINE TO SEE MORE PICS
OF THIS HOUSE
visit gardenandhome.co.za

GARDENHOME



SHOPPING COMPILED BY CANDICE BOTHA PHOTOGRAPHS SUPPLIED

add to the warm, layered feel. Schanè designed the cabinetry to be as practical and hardworking as it is good looking, with clever touches like desktops that lift up to reveal storage space and drawers that disguise plugs and wires. Part of Schanè's business is designing and manufacturing bespoke furniture, fittings and accessories so the couple was able to make exactly what they wanted.

Schanè and Keith intend to live here for many years, so they designed the house to evolve with them. "Creating two separate pods gives Grant, who lives with us, his own space where he can entertain his friends and eventually, we may move to that portion of the house while he and his family live in the main house," they explain. **GH**

THIS PAGE, ABOVE: The side tables in the **main bedroom** have been cleverly designed to provide as much storage as possible and hide unsightly wires. The top of the table slides open to reveal plugs.

OPPOSITE PAGE: A freestanding bath and cluster of pendant lights take centre stage in the **main bathroom**.

SOURCES **K. Light Import** klight.co.za **Lightco** store.lightco.co.za **Mabette Vermaak Architects** detailarch@mweb.co.za **O lá lá! Interiors** olalainteriors.com or 032 946 0641 **The Lighting Warehouse** lightingwarehouse.co.za **Weylandts** weylandts.co.za

Get the look
Choose striking pendant
lighting with an edge to get
the look of this house



Cocoon hanging lamp, R895, Weylandts.

Conical white and gold metal pendant, R763, K. Light Import.

Sphere chandelier, R3 990, K. Light Import.

Pendant shade with wood detail, R860, Lightco.

Pendant tapered ashwood shade, R5 990, Lightco.

Tiered polished brass pendant, R595, Weylandts.

Tapered cylinder in amber, R949,95, The Lighting Warehouse.